



Service Awareness

BMC Discovery

Improve visibility across your data center and the multi-cloud for reduced costs, lower risk, and dramatically better service

THE DIGITAL MANDATE

As organizations make the shift to strategic digital service management, they face a variety of requirements: gaining holistic visibility across not just the data center but all their multi-cloud assets, improving the quality and efficiency of business service delivery, managing end-of-life for software and hardware, and more. You need to know what you have so you can build upon it. In fact, 57% of IT managers plan to optimize current assets by removing redundancies, and 82% find it a requirement to understand infrastructure to manage security risks.

CHALLENGES

Realizing these objectives is easier said than done. Asset and inventory data is notoriously poor and incomplete. Information and technology are held in silos and are not consistently shared, which translates to limited visibility between assets and the services they support. Multi-cloud environments are increasingly complex. And as software and licensing models become more varied, it's easy to succumb to software sprawl, shadow IT, and audit unpreparedness.

BMC SOLUTION

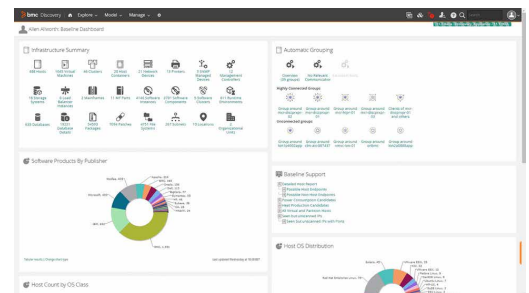
BMC Discovery supports your business goals around service quality, cost reduction, and risk reduction with a focus on service awareness. A service awareness approach enables you to achieve significant business value by making data center operations more efficient and effective, even across the largest and most complex multi-cloud environments. With BMC Discovery, you will gain much-needed visibility into IT infrastructure and operations, and better align digital service management with business demand.

KEY FEATURES

- Automated, agentless discovery of infrastructure, applications, and dependencies
- Native integration with CMDB and detailed data provenance underpinned by a scalable and secure architecture
- Start-anywhere application modeling and robust business service modeling
- Highly configurable data reconciliation engine allows processing of data from multiple sources, including streamlined end-of-life data
- Broadest set of out-of-the-box patterns that provide instant mapping of compute, storage, network, software, and multicloud environments

KEY BENEFITS

- Reduce costs. Lower expenses across the organization, improve resource utilization, and free up budget for more strategic initiatives as all job definitions are modified and validated to site standards and manual tasks are reduced during the promotion process.
- Boost agility. Gain visibility for faster and more informed business decisions.
- Manage risk. Remove unsupported software, become audit-ready, and remain confident that you will pass audits.
- Improve service quality. Automate processes for dramatically better quality and consistency of service.
- Achieve ROI in just 8 months. Benefit from an average 8-month payback period with 470% ROI over five years.



BMC Discovery offers a dynamic, holistic view of all infrastructure assets and dependencies.

For all the benefits of this product and more visit RJRinnovations.com



609 - 1420 Blair Place, Ottawa, ON Canada K1J 9L8

1-800-232-8457

info@rjrinnovations.com



